

Honeycomb Aran (Large)

CABLE PATTERN - Right Side

- P2 Tw2R. P2.
- (Work **Panel Pat A**. P2. Tw2R. P2) 3 times.
- Work **Panel Pat B**. P2. Tw2R. P1.
- Work **Panel Pat C**.
- P1. Tw2R. P2. Work **Panel Pat B**.
- (P2. Tw2R. P2. Work **Panel Pat A**) 3 times.
- P2. Tw2R. P2.

Tw2R:

Knit into front of 2nd stitch on needle, then knit into front of first stitch and slip both stitches off needle together

Panel Pat A

1st row: C4F. K2.

3rd row: K2. C4B.

Panel Pat B

1st row: P3. T3B. K1. T3F. P3.

3rd row: P2. T3B. K1. P1. K1. T3F. P2.

5th row: P1. T3B. (K1. P1) twice. K1. T3F. P1.

7th row: T3B. (K1. P1) 3 times. K1. T3F.

9th row: T3F. (P1. K1) 3 times. P1. T3B.

11th row: P1. T3F. (P1. K1) twice. P1. T3B. P1.

13th row: P2. T3F. P1. K1. P1. T3B. P2.

15th row: P3. T3F. P1. T3B. P3.

17th row: P4. C5F. P4.

Panel Pat C

1st row: P3. C4B. (P4. C4B) 3 times. P3.

3rd row: P1. (T4B. T4F) 4 times. P1.

5th row: P1. K2. P4. (C4F. P4) 3 times. K2. P1.

7th row: P1. (T4F. T4B) 4 times. P1.

C4B = Slip 2 stitches onto CN and leave at the back of work.
 ● K2, then K2 from CN

C4F = Slip 2 stitches onto CN and leave at the front of work.
 ● K2, then K2 from CN

C5F = Slip 2 stitches onto CN and leave at front of work.
 ● K2, P1, then K2 from CN

T3B = Slip 1 stitch onto CN and leave at back of work,

- K2, then P1 from CN

T3F = Slip 2 stitches onto CN and leave at front of work.

- P1, then K2 from CN

T4B = Slip 2 stitches onto CN and leave at the back of the work.

- K2, then P2 from CN

T4F = Slip 2 stitches onto CN and leave at front of work.

- P2, then K2 from CN

CABLE PATTERN - Wrong Side

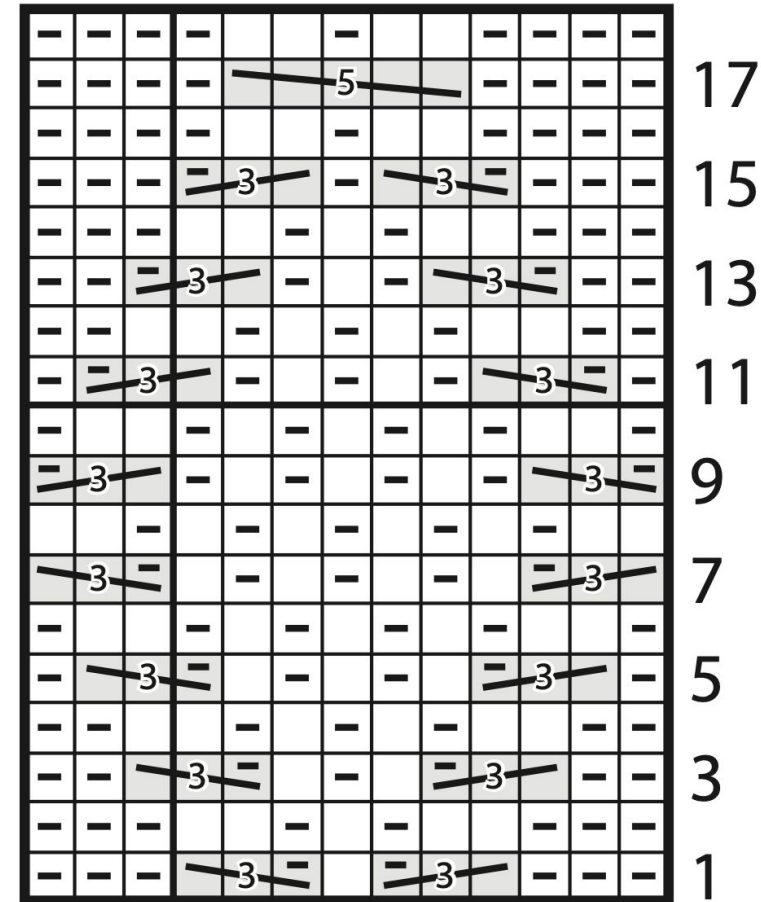
- K2. P2. K2.
- (Work **Panel Pat A**. K2. P2. K2) 3 times.
- Work **Panel Pat B**. K2. P2. K1.
- Work **Panel Pat C**.
- K1. P2. K2. Work **Panel Pat B**.
- (K2. P2. K2. Work **Panel Pat A**) 3 times.
- K2. P2. K2.

Panel Pat A

2nd/4th rows:
P6.

- Purl on WS rows.
- Knit on WS rows.

Panel Pat B



Panel Pat C

