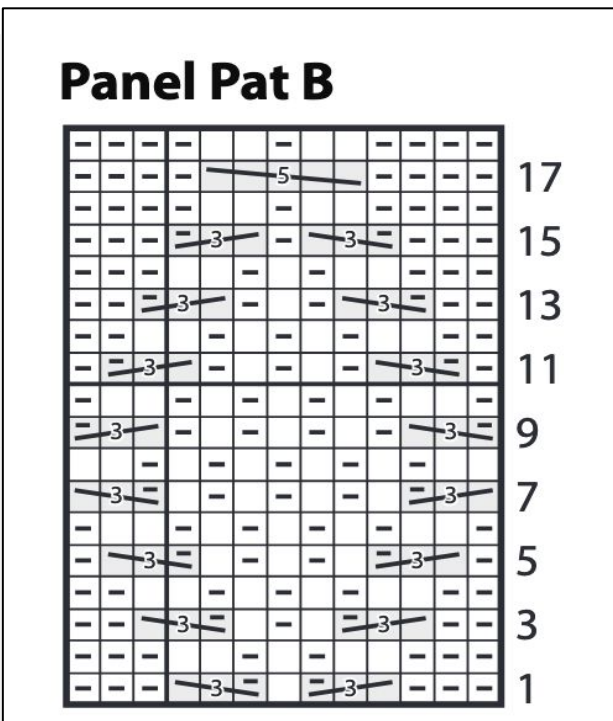


## SLEEVES - Right Side

<p>P2. Tw2R. P2. Work <b>Panel Pat A</b>. P2. Tw2R. P2. Work <b>Panel Pat B</b>. P2. Tw2R. P2. Work <b>Panel Pat A</b>. P2. Tw2R. P2.</p>	<p><b>T3F</b> = Slip 2 stitches onto CN and leave at front of work.</p> <ul style="list-style-type: none"> <li>• P1, then K2 from CN</li> </ul> <p><b>C5F</b> = Slip 2 stitches onto CN and leave at front of work.</p> <ul style="list-style-type: none"> <li>• K2, P1, then K2 from CN</li> </ul>	<p><b>Panel Pat A</b></p>	<p><b>Panel Pat B</b></p>
<p><b>Tw2R:</b> Knit into front of 2nd stitch on needle, then knit into front of first stitch and slip both stitches off needle together.</p> <p><b>T3B</b> = Slip 1 stitch onto CN and leave at back of work,</p> <ul style="list-style-type: none"> <li>• K2, then P1 from CN</li> </ul>		<p><b>1st row:</b> C4F. K2. <b>3rd row:</b> K2. C4B.</p>	<p><b>1st row:</b> P3. T3B. K1. T3F. P3. <b>3rd row:</b> P2. T3B. K1. P1. K1. T3F. P2. <b>5th row:</b> P1. T3B. (K1. P1) twice. K1. T3F. P1. <b>7th row:</b> T3B. (K1. P1) 3 times. K1. T3F. <b>9th row:</b> T3F. (P1. K1) 3 times. P1. T3B. <b>11th row:</b> P1. T3F. (P1. K1) twice. P1. T3B. P1. <b>13th row:</b> P2. T3F. P1. K1. P1. T3B. P2. <b>15th row:</b> P3. T3F. P1. T3B. P3. <b>17th row:</b> P4. C5F. P4.</p>

## SLEEVES - Wrong Side

<p>K2. P2. K2. Work <b>Panel Pat A</b>. K2. P2. K2. Work <b>Panel Pat B</b>. K2. P2. K2. Work <b>Panel Pat A</b>. K2. P2. K2.</p>
<p><b>Panel Pat A</b></p>
<p><b>2nd/4th rows:</b> P6</p>
<p><input type="checkbox"/> Purl on WS rows. <input checked="" type="checkbox"/> Knit on WS rows.</p>



Cont in established pat, inc 1 st each end of needle on next and following WS rows until there are 63 sts, taking inc sts into repeats of (**Panel Pat A**. P2. Tw2R. P2)

Then on following 4th rows until there are 103 sts, taking inc sts into repeats of (**Panel Pat A**. P2. Tw2R. P2). Cont even in pat until work from beg measures 17½" ending on a WS row.

**Shape raglans:** Keeping cont of pat, cast off 3 sts beg next 2 rows 97 sts.